

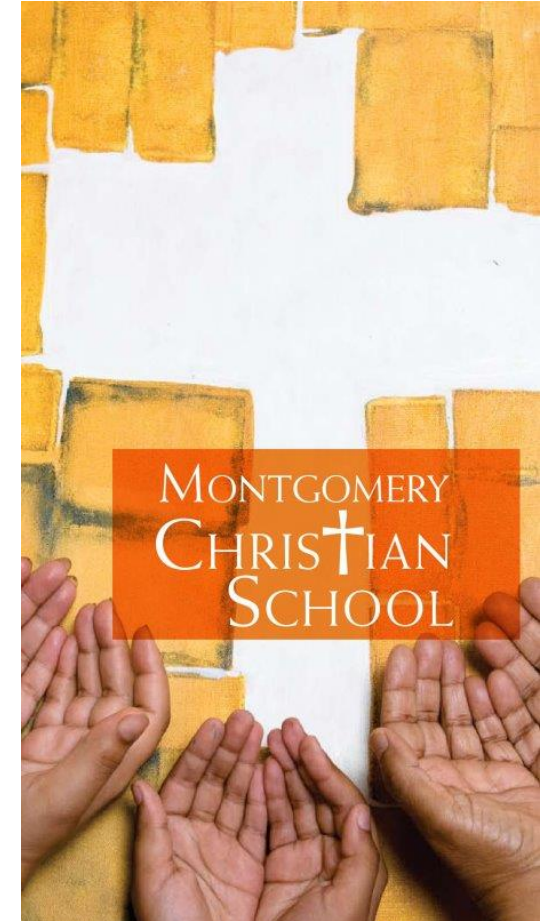
Montgomery Christian School was started by a group of concerned citizens who saw low income children failing at school and not being prepared for productive lives as adults and citizens of Montgomery. The reasons for such failures are many, but include, poverty, lack of parental involvement, peer pressure and low achievement in the public school which is essentially the only option for many families. While there are many excellent private schools in Montgomery, low and modest income parents who want another choice cannot afford the cost of private school tuition.

The school targets those families who are willing to make sacrifices for their child's education. Incomes vary, but most are below \$25,000 a year. Average tuition is around \$60 per month, even though the school's cost per child is approximately \$6,500 per year.

Montgomery Christian School
1728 South Hull Street
Montgomery, AL 36104

Recipient Name
Address
City, ST ZIP Code

Montgomery Christian School 2014-2015 Annual Report



Your donations help make a difference in the life of an MCS student.



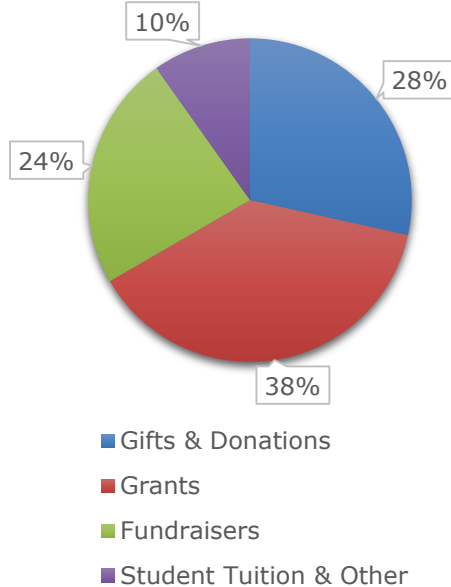
We are proud that 88¢ of every \$1 is used in the classroom!

Montgomery Christian School has been able to place an emphasis on reading, math and Biblical character development through small classes and individualized attention.

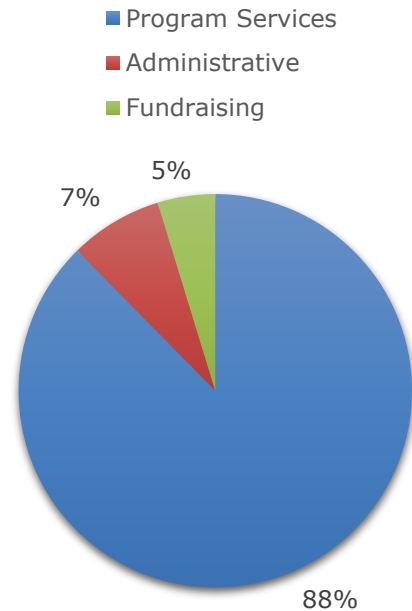
The school integrates a Christian worldview as the standard for examining truth across all academic disciplines, emphasizes academic proficiency as a foundation for life-long learning and instills courage, self-discipline, and personal responsibility.

Our students are also able to take part in music, dance and art classes on a weekly basis.

Support & Revenue



Expenses



Contact Us

Montgomery Christian School
 1728 South Hull Street
 Montgomery, AL 36104
 334-386-1749

Kathi Atkins, Head of School
katkins@montgomerychristianschool.org

Christy Jarrett, Office Manager
cjarrett@montgomerychristianschool.org

www.montgomerychristianschool.org